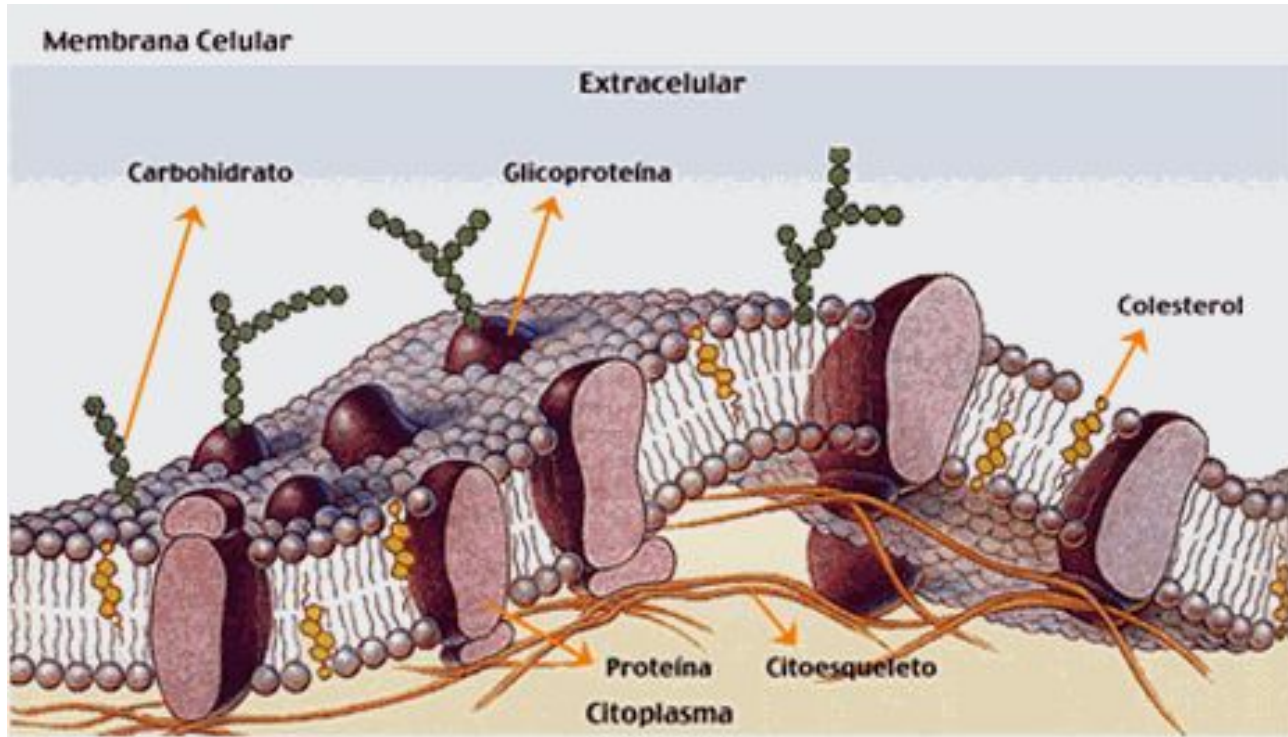
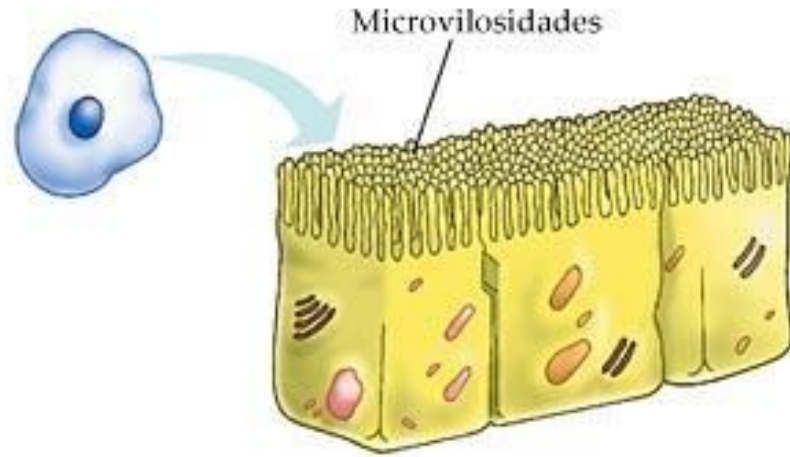
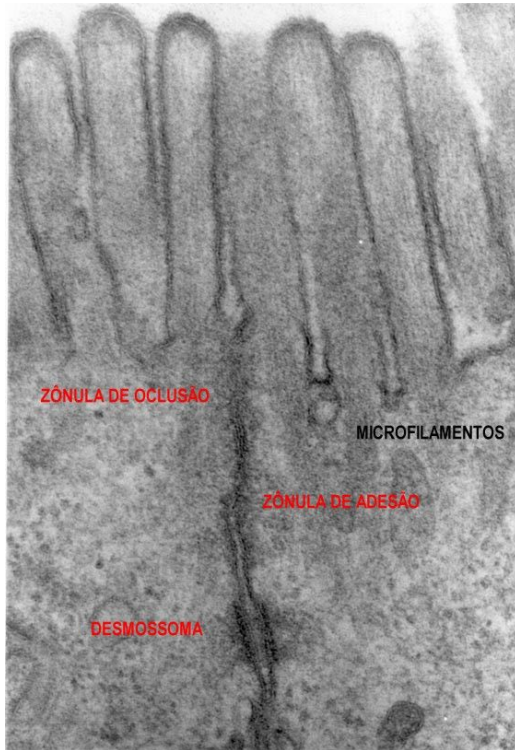


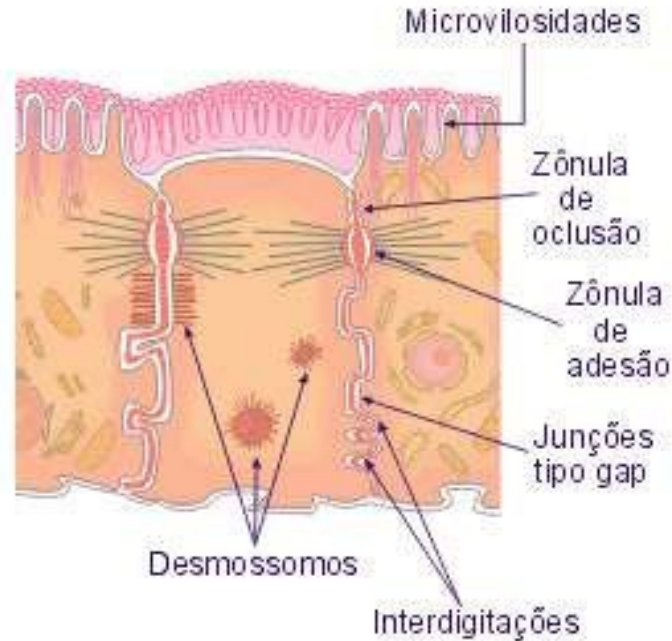
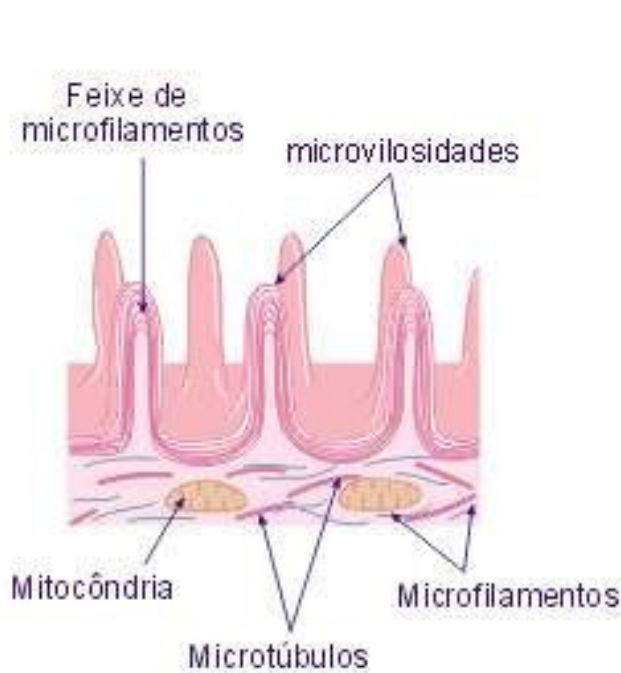
Membrana plasmática “modelo do mosaico fluido”



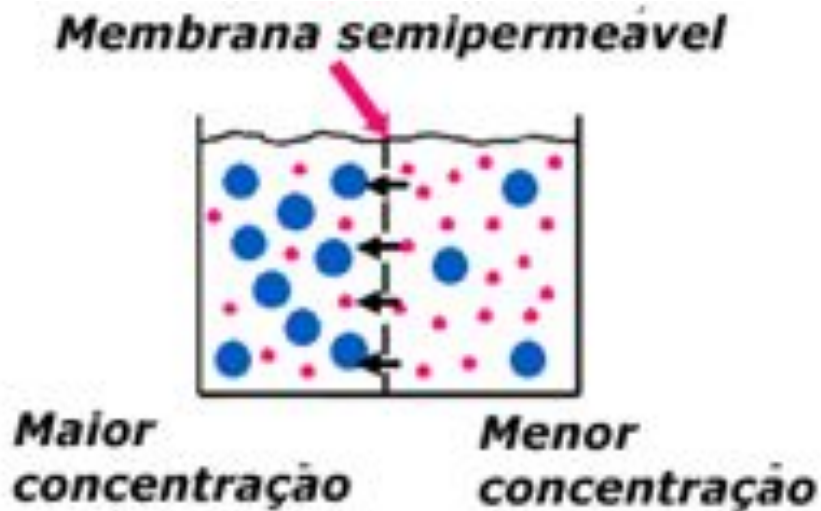
Especializações da m. plasmática



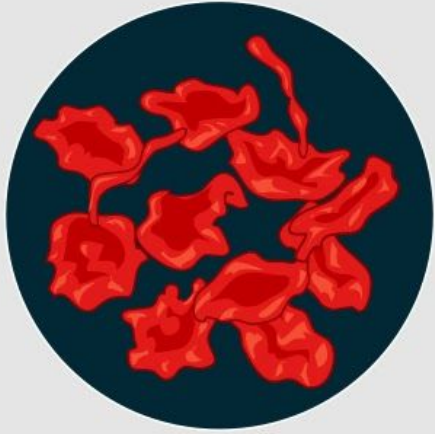
Desmossomos e interdigitações



Osmose: passagem do solvente do meio [-] para o meio [+] através de uma membrana semi-permeável



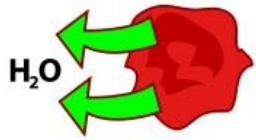
Hipertônico



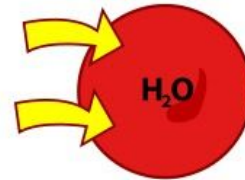
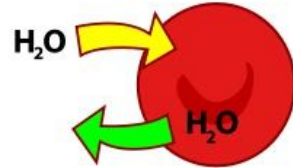
Isotônico



Hipotônico

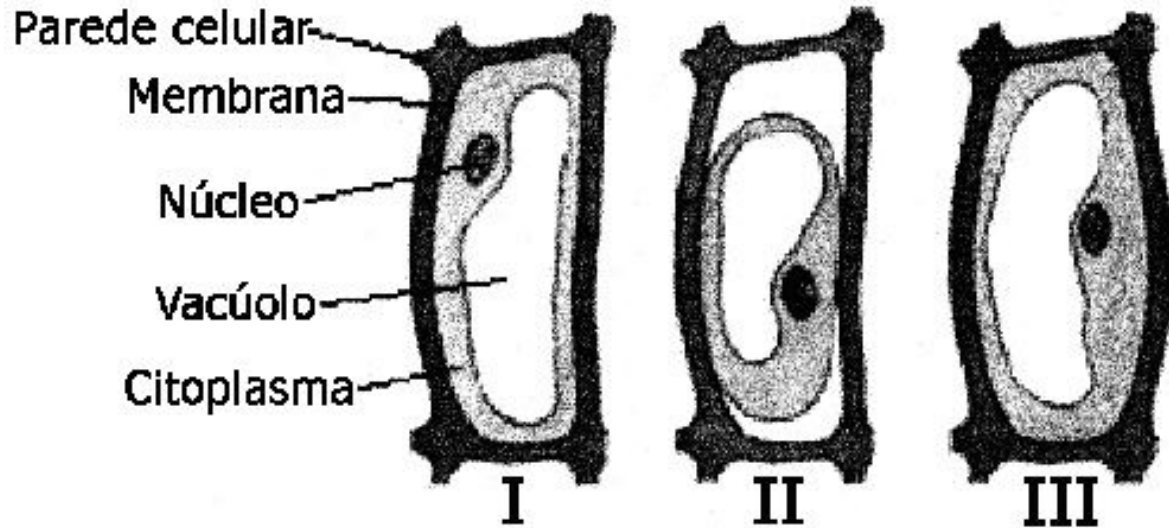


Crenação

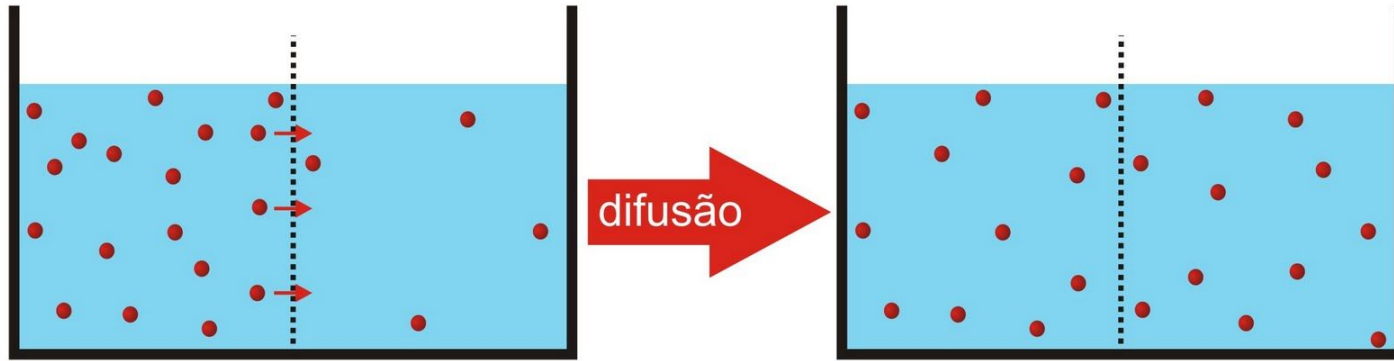


hemólise

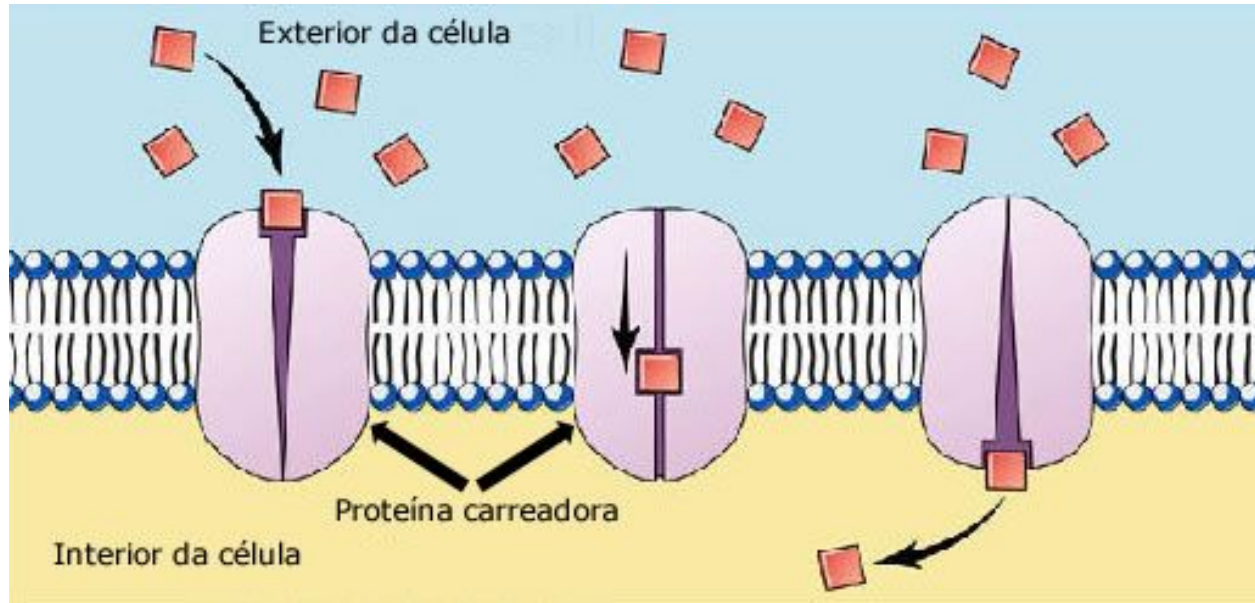
Plasmólise e deplasmólise



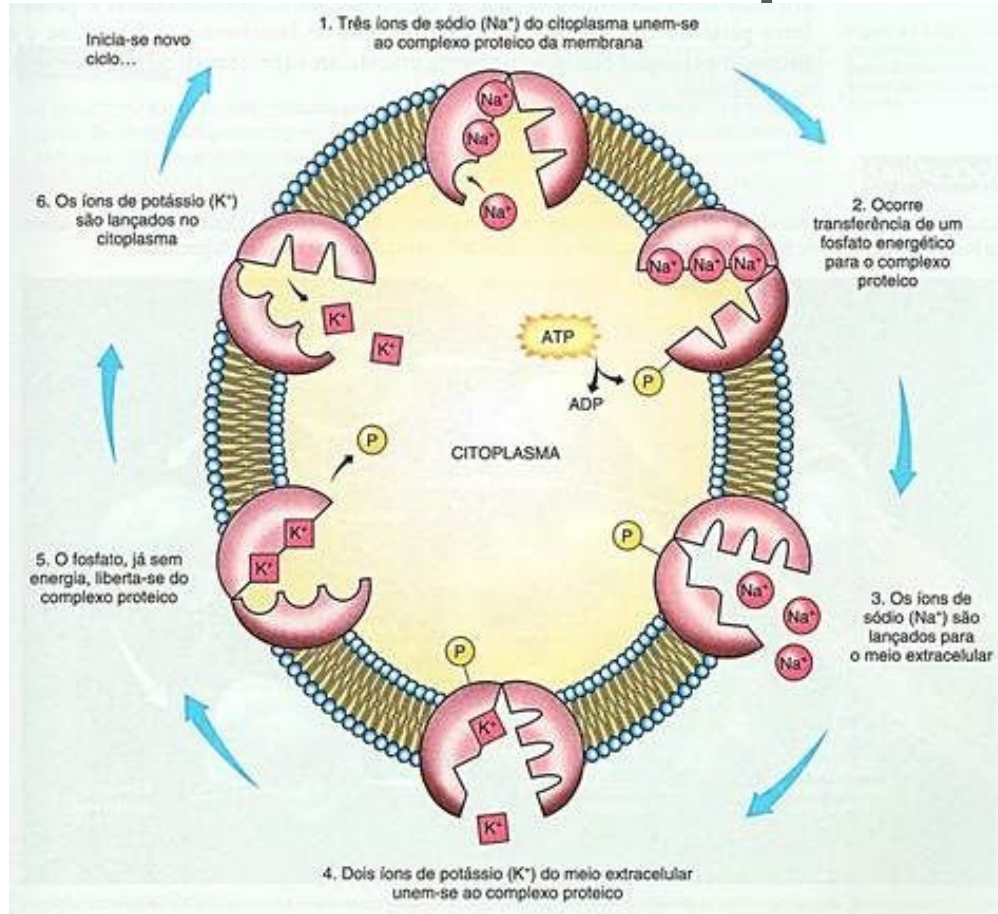
Difusão: passagem do soluto do meio
[+] para o meio [-]



Difusão facilitada: com permeases



Bomba de sódio e potássio



Endocitose e exocitose

